

# Entertaining Options



Pérez Art Museum Miami

# Museum Buyout

Buying out the PAMM guarantees exclusive use of all event spaces and the galleries. Groups of 300 or more and weddings require a museum buyout.



## RATE

**\$18,000**

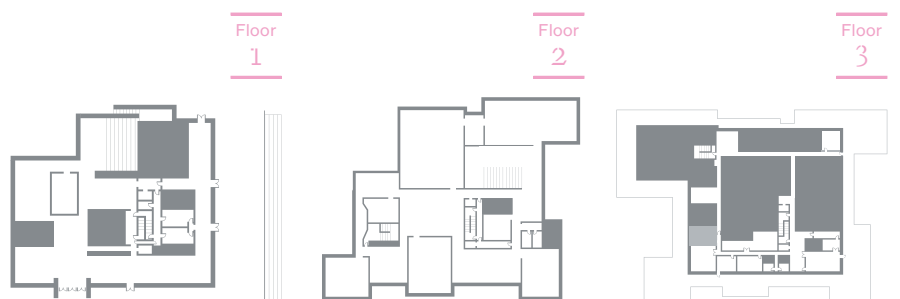
*Plus \$5 per guest over 400 guests*

## CAPACITY

**6,000**

## SQUARE FEET

**200,000**



# East Portico

The East Portico is one of the premier event spaces at PAMM. This space offers a direct, breathtaking view of Biscayne Bay. This is the perfect space to host cocktail receptions and dinner parties. Museum buyouts are required for groups of 300 or more.



## RATE

**\$13,500**

## CAPACITY

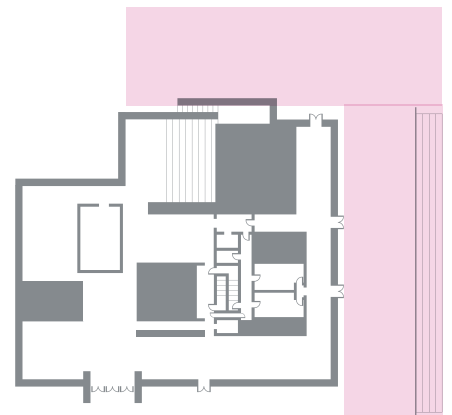
**1,200** Reception  
**500** Banquet

## SQUARE FEET

**15,490**

Floor

1



# Deborah and Larry Hoffman Boardroom and Northern Trust Terrace

The Deborah and Larry Hoffman Boardroom is the perfect space to host meetings or smaller social events. The Boardroom is equipped with a mounted LCD touchscreen monitor with presentation capabilities. It is located on the third level with access to the Northern Trust Terrace, which has direct views of Biscayne Bay. The Northern Trust Terrace is perfect for lunch breaks between meetings, a postmeeting cocktail or an intimate dinner party with glowing views.



<b>DAYTIME RATE</b>	<b>EVENING RATE</b>
<b>\$3,500</b>	<b>\$6,500</b>
<b>CAPACITY</b>	<b>SQUARE FEET</b>
<b>150</b> Reception	<b>3,454</b>
<b>120</b> Banquet	

Floor  
3



# Southside Terraces

Enjoy 180° views of Biscayne Bay, Maurice A. Ferré Park and Downtown Miami on PAMM's Southside Terraces.



**DAYTIME RATE**

**\$5,000**

**EVENING RATE**

**\$10,000**

**CAPACITY**

**300**

**SQUARE FEET**

**4,422**

Floor  
**3**



# Auditorium

The Auditorium is ideal for business meetings, performances, film screenings, lectures or educational activities. This space is equipped with state-of-the-art audiovisual technology.



## RATE

**\$3,500**  
Seating for 150

**\$5,000**  
Seating for 250

## CAPACITY

**150**  
Small Configuration  
**250**  
Large Configuration

## SQUARE FEET

**2,628**

Floor  
2



# Paresky Hall

The Paresky Hall is adjacent to the Auditorium and has a direct view of Biscayne Bay through its floor to ceiling windows. It is the perfect space to host any special occasion.



## RATE

**\$10,000**

## CAPACITY

**150** Reception  
**100** Banquet

## SQUARE FEET

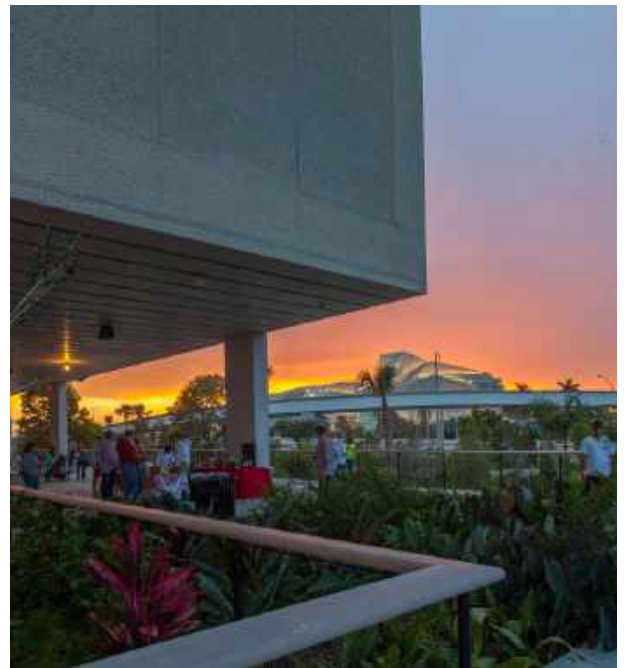
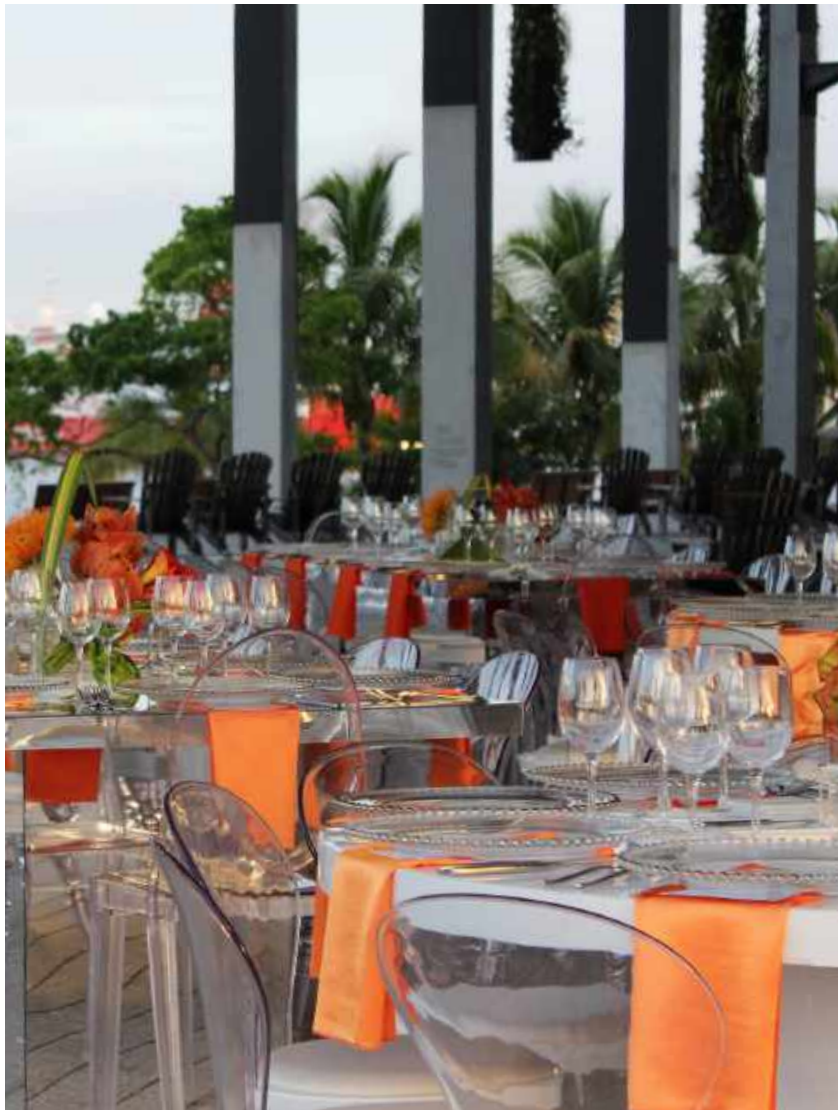
**2,130**

Floor  
**2**



# Terrace Platform

The Terrace Platform is another premier event space at PAMM. This is the perfect space for social events or business lunches.



## RATE

**\$10,000**

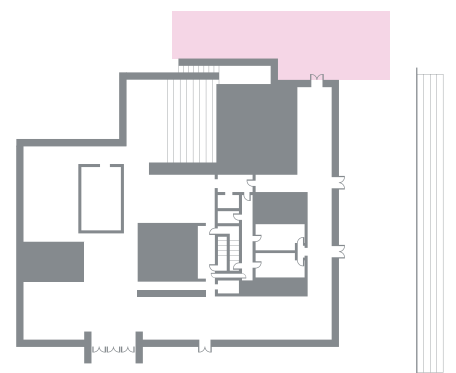
## CAPACITY

**350** Reception  
**250** Banquet

## SQUARE FEET

**3,302**

Floor  
**1**





# Verde

Verde can be reserved for private events once the museum closes to the public and can be booked within 30 days of the event. Offering modern décor and beautiful views, Verde is perfect for a last minute daytime or evening social or corporate event.



## RATE

**\$1,500**

## CAPACITY

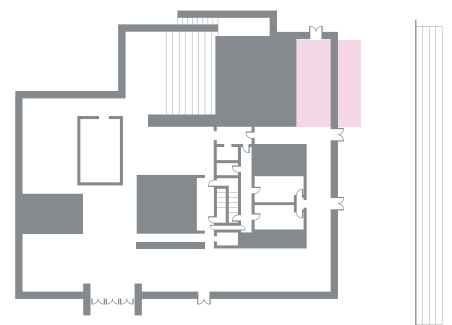
**70** Inside  
**88** Outside

## SQUARE FEET

**3,000**

Floor

1



# Entertain at PAMM

For more information about Miami's premier event space contact:

**Alan Newman**  
entertain@pamm.org  
786 345 5657

