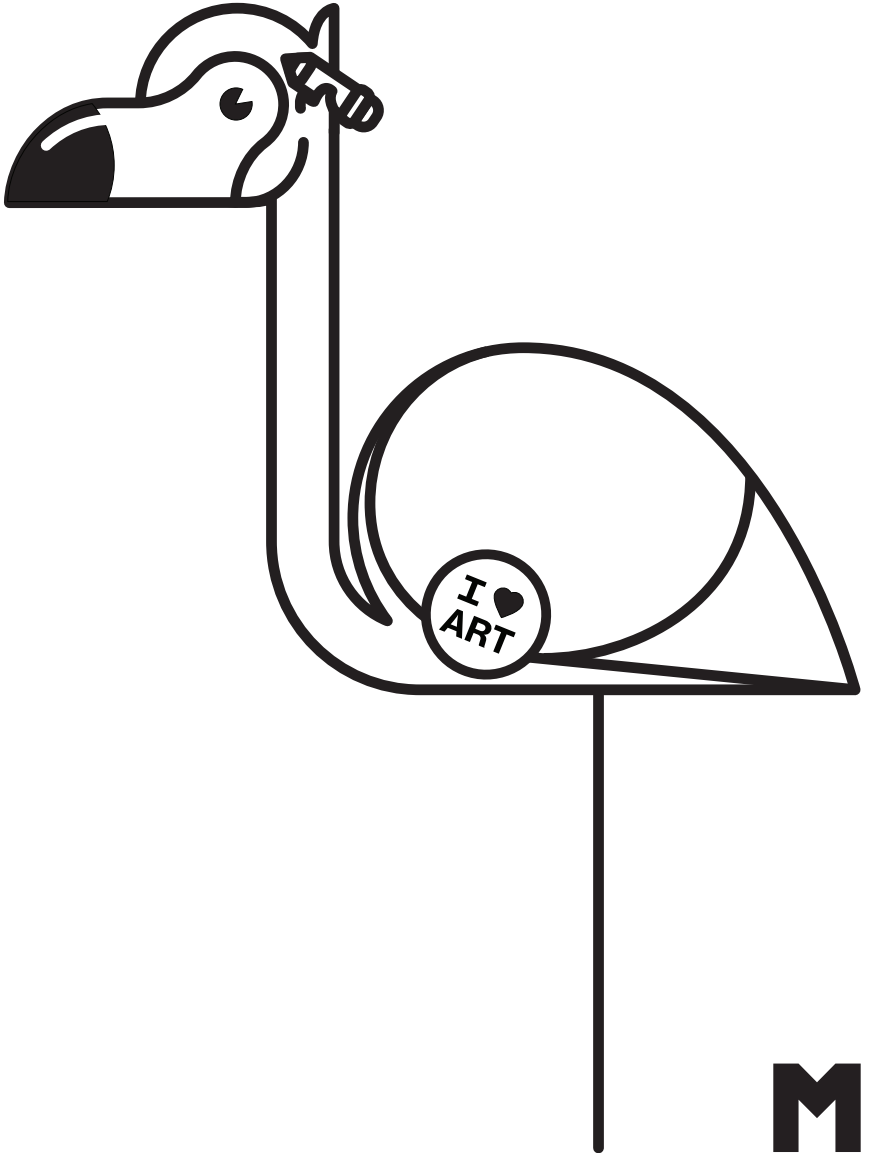


**A**

**A**

# ARTivity Booklet



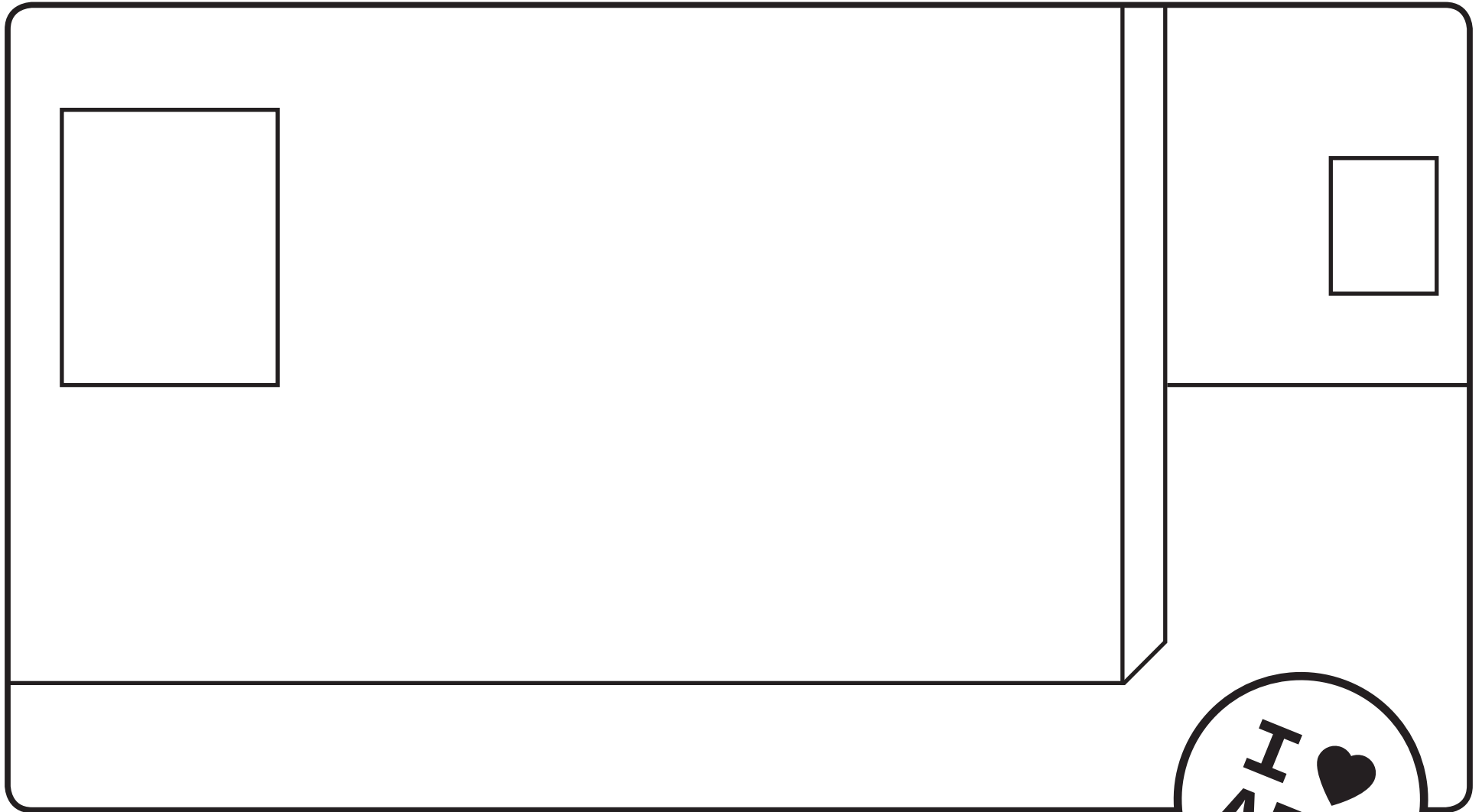
**M**

**M**



# Curate Your Own Gallery

Create and curate\* your own space.  
Draw 2D objects like paintings and  
3D artworks like sculptures.



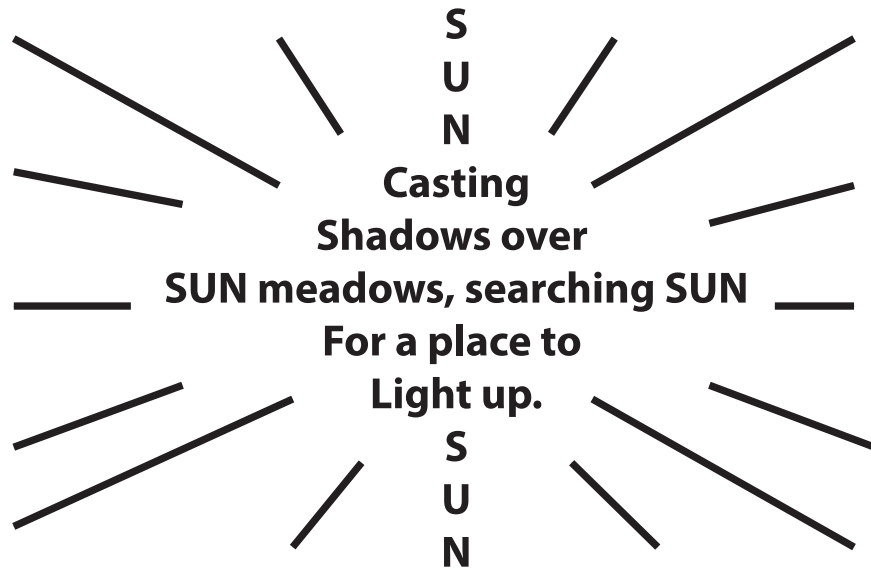
\***Curate:** to collect and present objects such as paintings, sculptures, or videos, for people to enjoy, using expert knowledge.



# Concrete Poetry

Look for letters and words that form familiar shapes in the galleries.

A CONCRETE poem's words are arranged in such a way that their shape reflects the poem's meaning. Check out the example and then create your own below!



Create your concrete poem here:

A large, empty rounded rectangle with a black border, intended for writing a concrete poem. A simple line drawing of a pencil is positioned at the bottom right corner of the rectangle.

**Bingo** Find the artworks using the clues below and fill in the blank. For bingo, try to get two rows!

**Figure or  
Portrait**

Artwork Title:

\_\_\_\_\_

**Artwork with  
Brand Name**

Artist:

\_\_\_\_\_

**Metallic  
Material**

Artwork Title:

\_\_\_\_\_

Hint: Some artworks may be outside.

**Shiny  
Surface**

Artist:

\_\_\_\_\_

**Artwork Larger  
than You**

Artwork Title:

\_\_\_\_\_

**Flag or  
Car**

Artist:

\_\_\_\_\_



**Blue Plastic Tubes**

Artwork Title:

\_\_\_\_\_

**Red Paint**

Artist:

\_\_\_\_\_

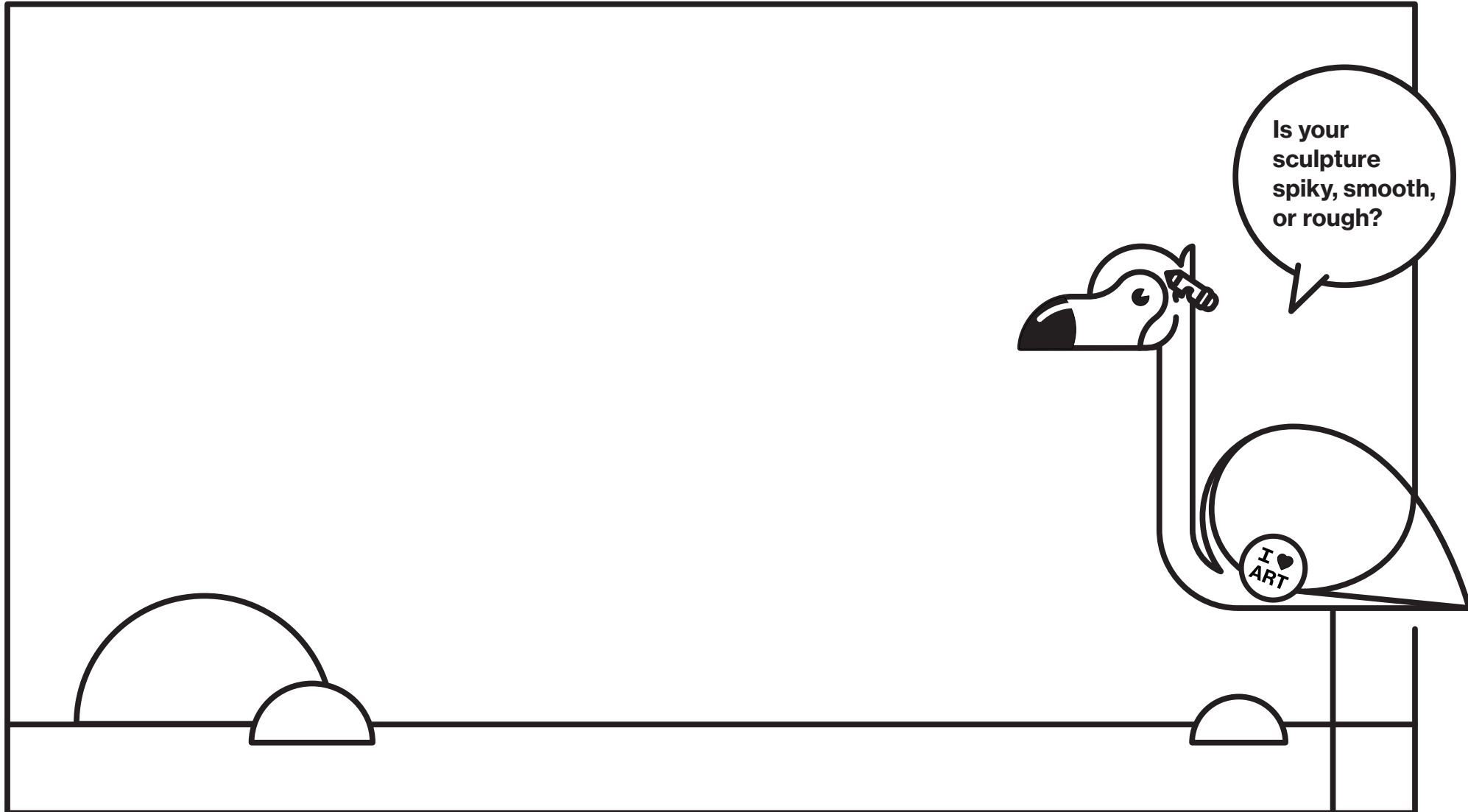
**Squares and Triangles**

Artwork Title:

\_\_\_\_\_

# Take your art adventure outside and explore our Mary M. and Sash A. Spencer Sculpture Garden (18 on map).

Take a look around and sketch-out your own outdoor garden sculpture.  
Think about different textures.



**Pérez Art Museum Miami**  
**1103 Biscayne Blvd., Miami, FL 33132**  
**education @pamm.org**

**Would you like to come back and visit PAMM with your school?**

**Book a school tour!**

Visit [pamm.org/school-tour-request-form](http://pamm.org/school-tour-request-form)

**Upcoming events!**

Visit [pamm.org/calendar](http://pamm.org/calendar) to check out fun programs for audiences of all ages!

**Questions?**

Contact us: [education@pamm.org](mailto:education@pamm.org)

#pammlearn



Accredited by the American Alliance of Museums, Pérez Art Museum Miami (PAMM) is sponsored in part by the State of Florida, Department of State, Division of Cultural Affairs, and the Florida Council on Arts and Culture. Support is provided by the Miami-Dade County Department of Cultural Affairs and the Cultural Affairs Council, the Miami-Dade County Mayor and Board of County Commissioners. Additional support is provided by the City of Miami and the Miami OMNI Community Redevelopment Agency (OMNI CRA). Pérez Art Museum Miami is an accessible facility. All contents ©Pérez Art Museum Miami. All rights reserved.

