



PAMM in Your Classroom

Carlos Estevez: *The Permanent Battle...*, 2011

Grades 3-5



Pérez Art Museum Miami





Welcome to Pérez Art Museum Miami



Pérez Art Museum Miami

About Us

Pérez Art Museum Miami (PAMM) is a museum that collects modern and contemporary art.

We are located in Downtown Miami, next to Biscayne Bay in Maurice Ferré Park.



Genuine Human Interaction

Engage Critical Thinking

We use art to enable learning and dialogue.

Our goal is to share tools to help everyone understand art for themselves.

There is no wrong way to look at and talk about art.



Meet the Artist

Carlos Estevez is one of the most prominent and prolific Cuban-born artist residing in Miami.

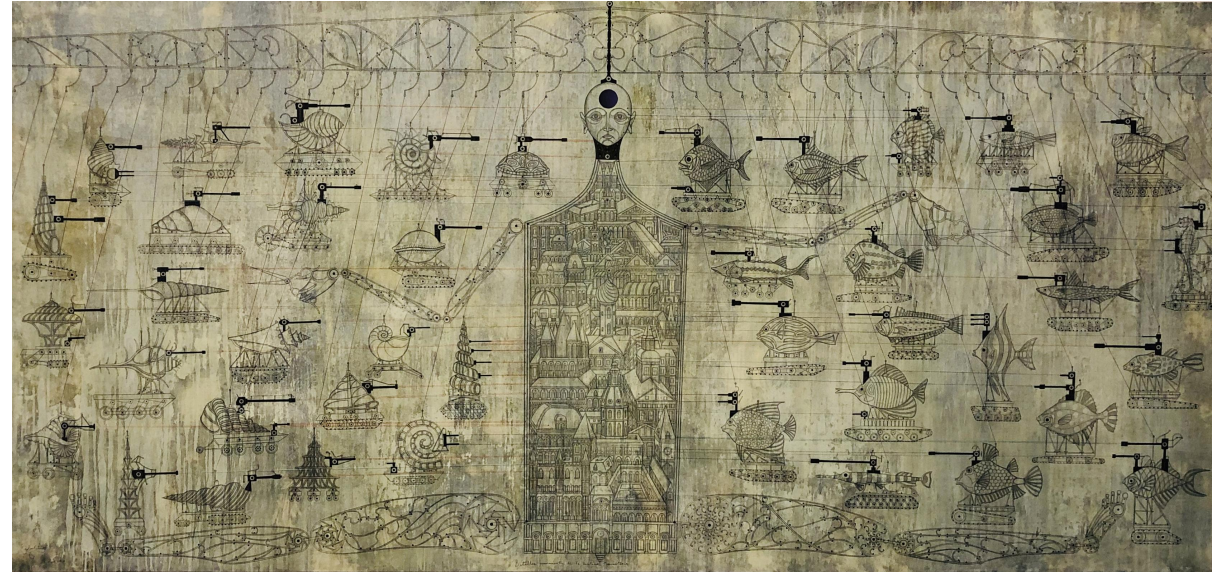


See the Artwork

Carlos Estevez b. 1969, Havana;
lives in Miami, FL

*La Batalla permanente de la Vida
Transitoria* (The Permanent Battle of the
Transitory Life) 2011

Oil and watercolor pencil on canvas





Vocabulary and Inquiry

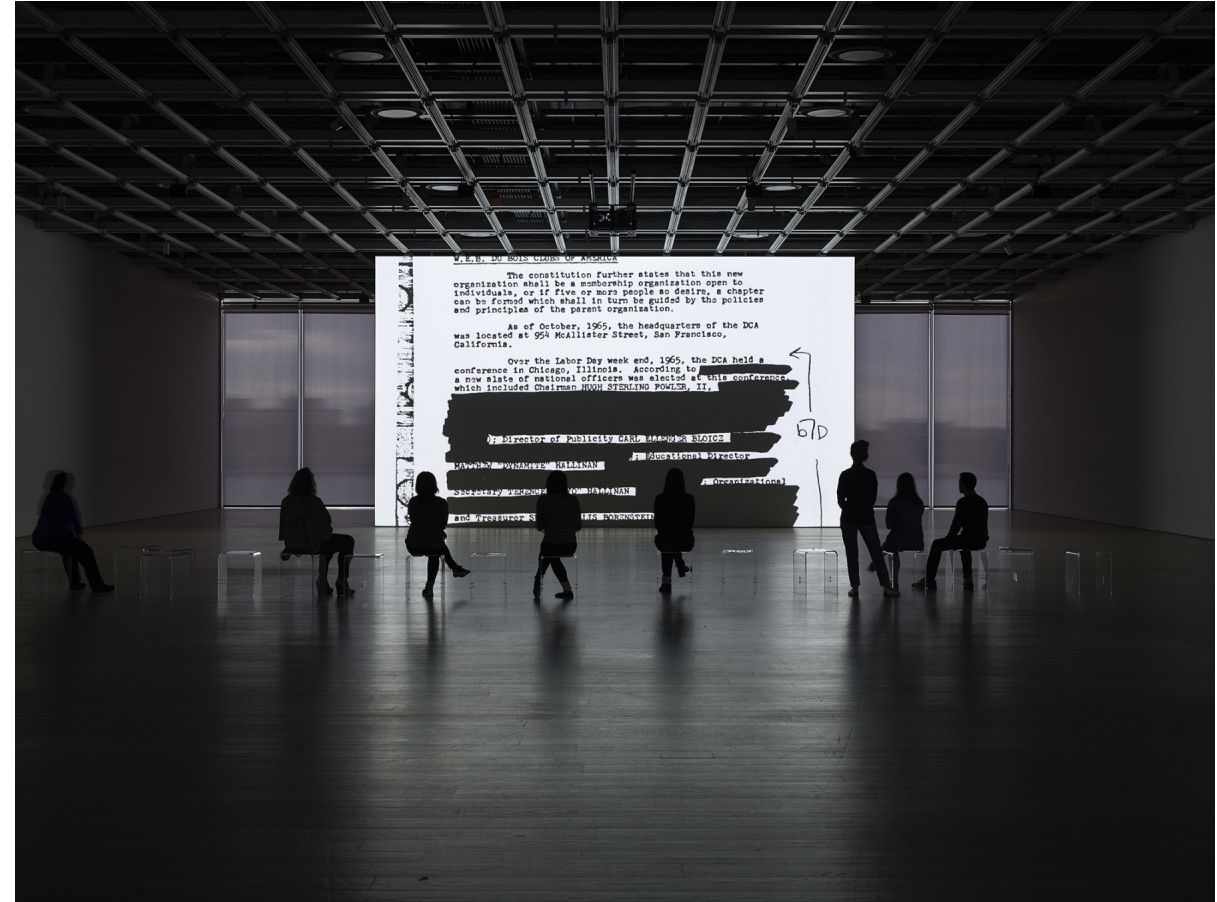
Words and Questions about Art



Vocabulary

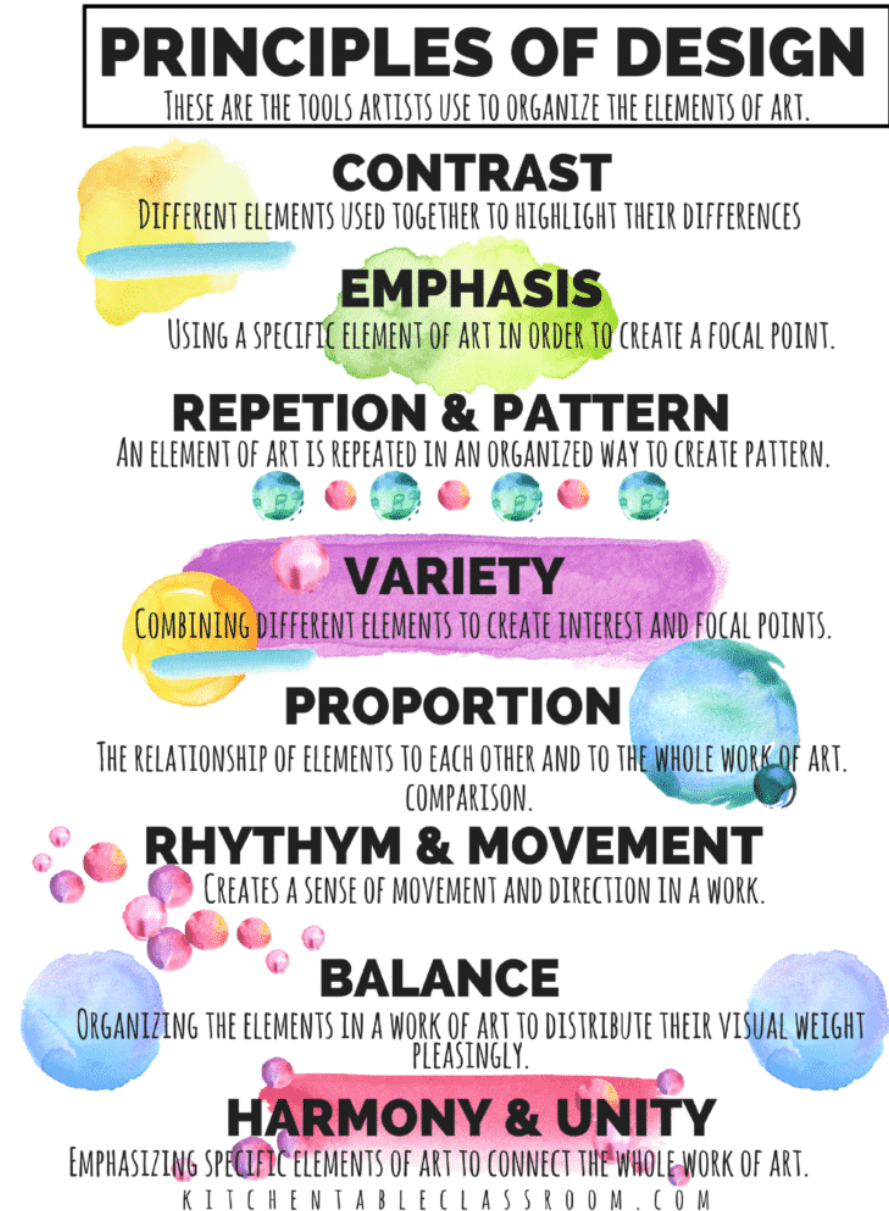
Let's go over some words that will help guide us during our virtual tour.

Maybe you know some already, maybe some are new to you.



Design

An arrangement of lines, shapes, and colors used by artists as a tool to create art.



Symbols

A thing that represents or stands for something else, especially a material object representing something abstract.



Surreal

Any seemingly magical process of combining different elements into something new.



Inquiry Method

PAMM Teaching Artists use the Inquiry Method.

We ask a series of questions to encourage learners to think about and engage with art for themselves.

HOW TO LOOK AT ART

DESCRIPTION

A visual inventory is made

WHAT DO YOU SEE?

**LINE, SHAPE, COLOR, TEXTURE, SPACE, MEDIA/ MATERIALS
USED**

ANALYSIS

Relationships among the design elements are noted

BALANCE, RHYTHM, CONTRAST, PROPORTION, EMPHASIS

INTERPRETATION

An attempt is made to determine the idea which seems to unify all of the separate traits of the artwork

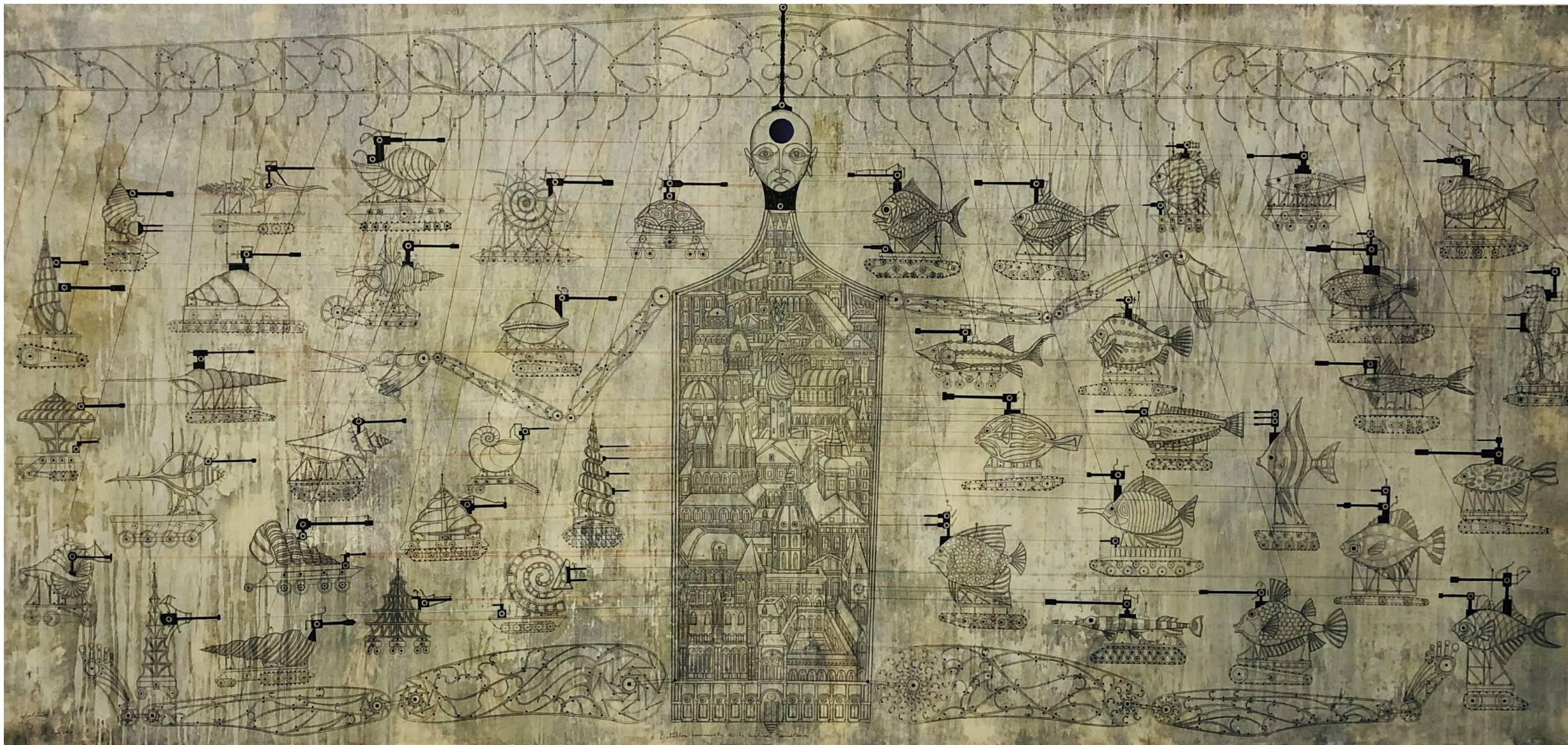
WHAT IS THE MESSAGE OF THE ARTIST?

JUDGMENT

*The viewer may form a judgment about the work
Connect/ Evaluation*

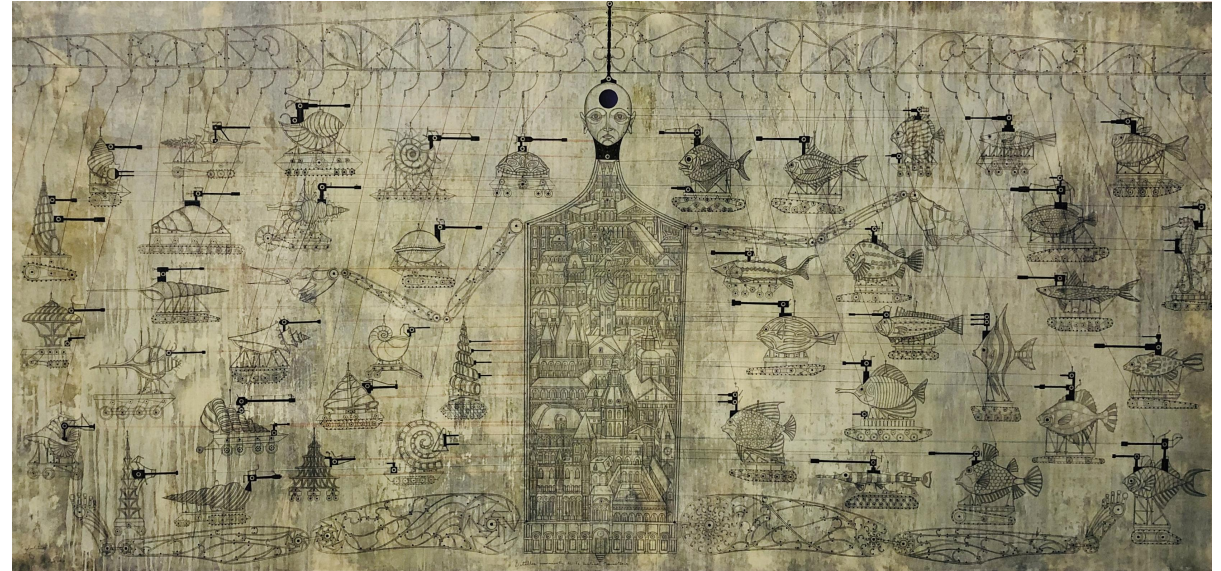
HOW DO I RELATE TO THIS PIECE OF ART?

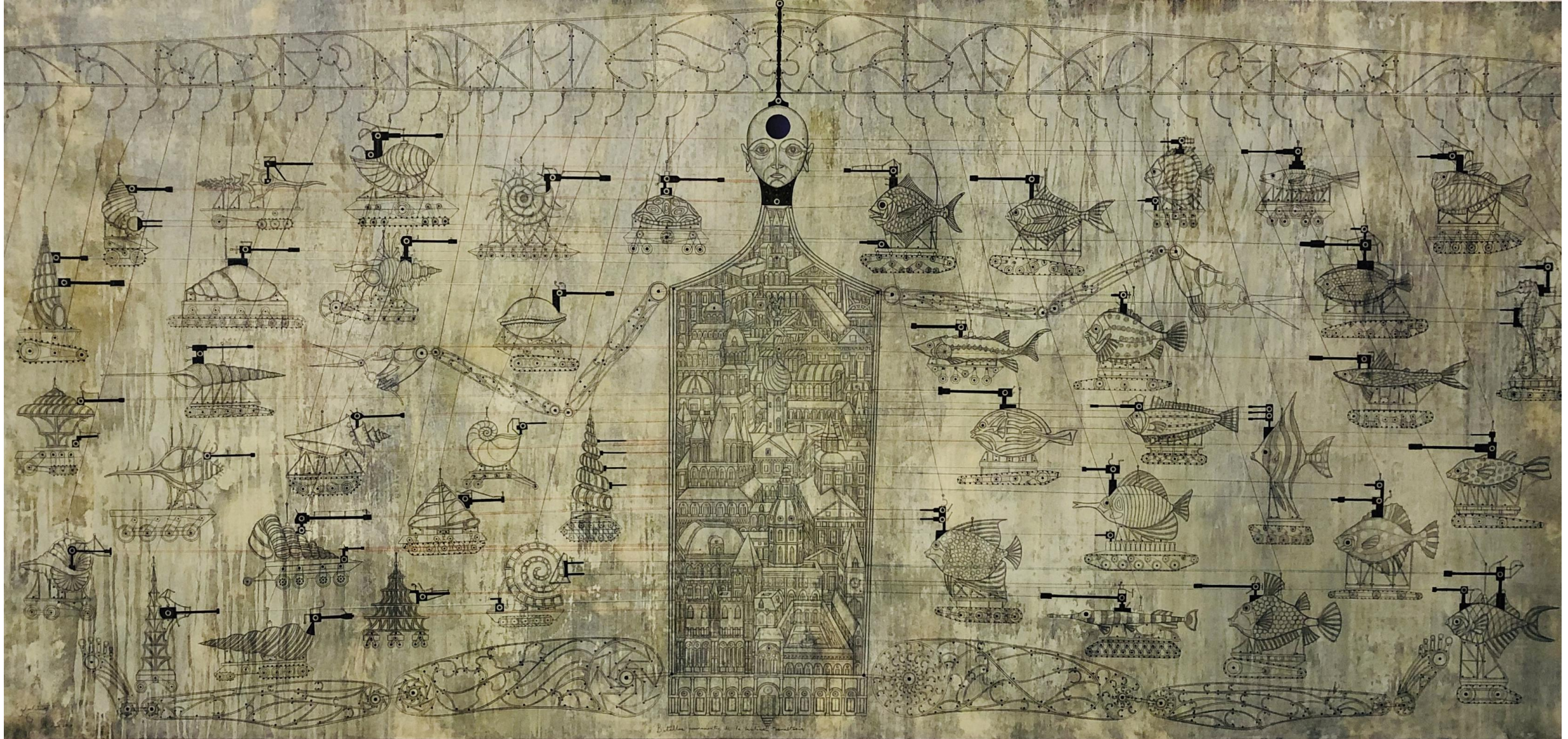
Credit: Edmund B. Feldman



Description

Using the ZOOM chat, type your first observations and pay attention to details.

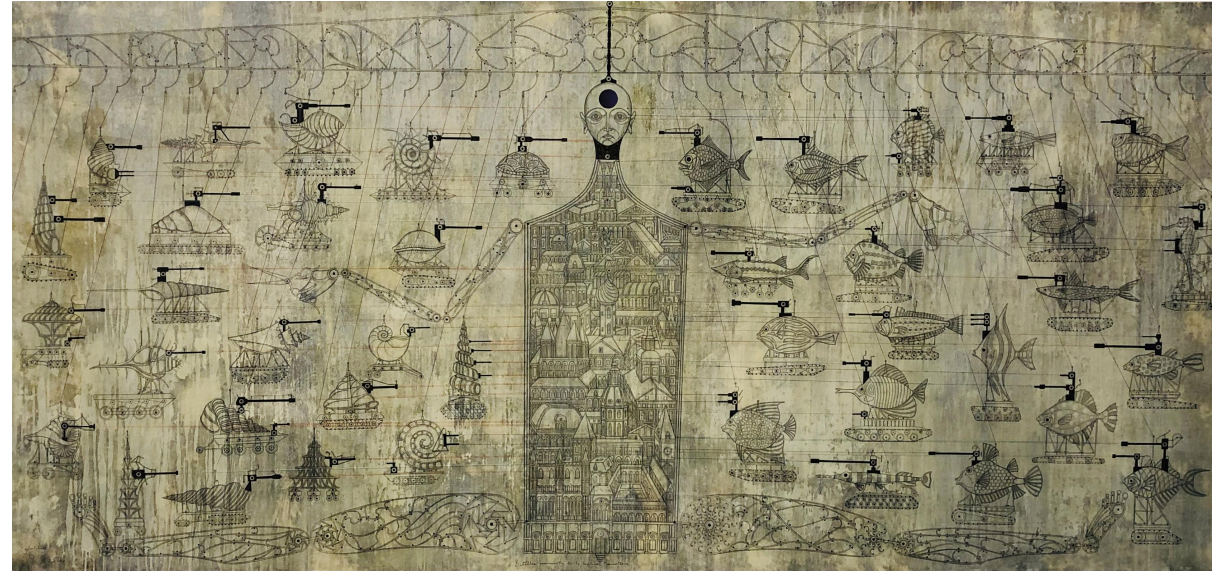


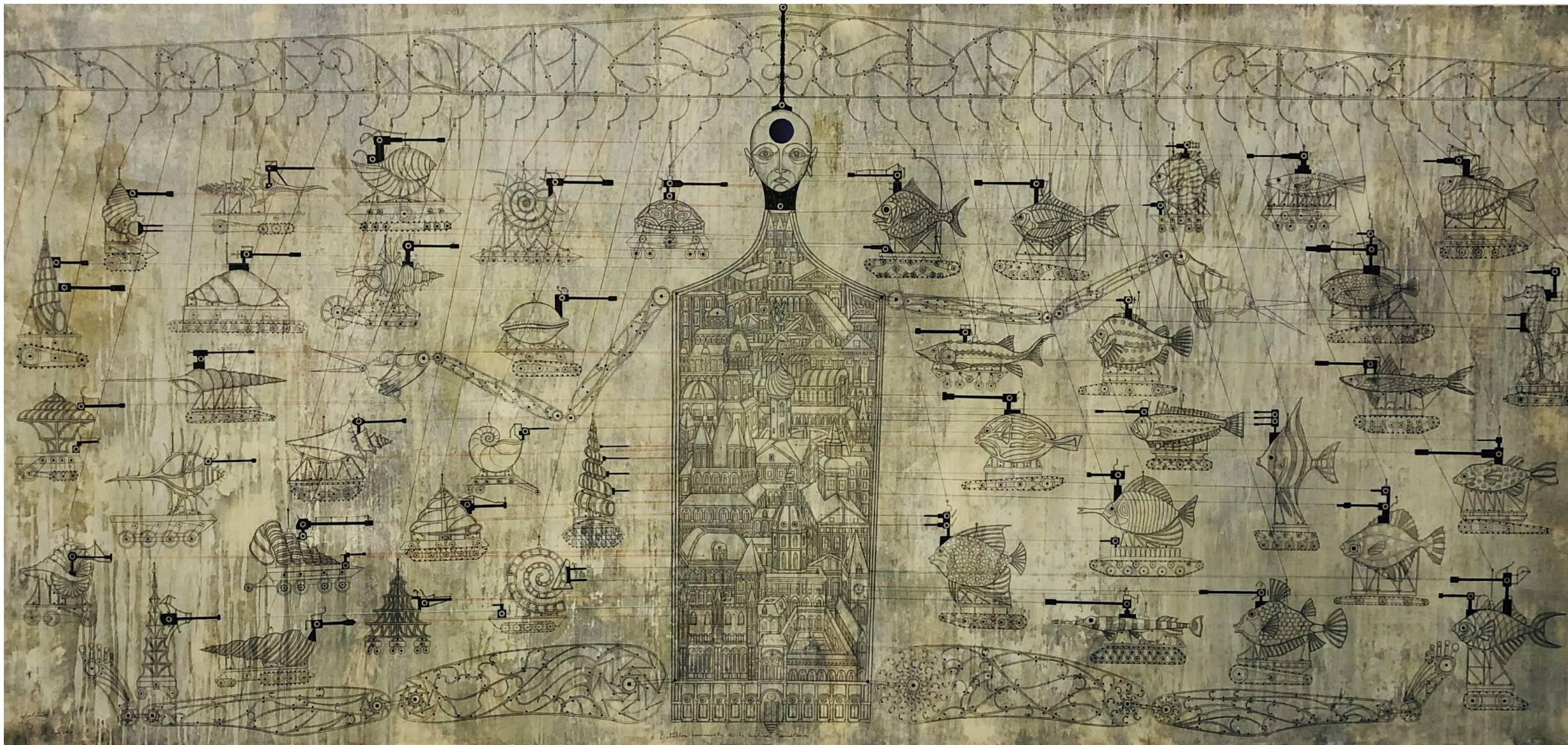


Analysis

The title of this painting is *The Permanent Battle of the Transitory Life*.

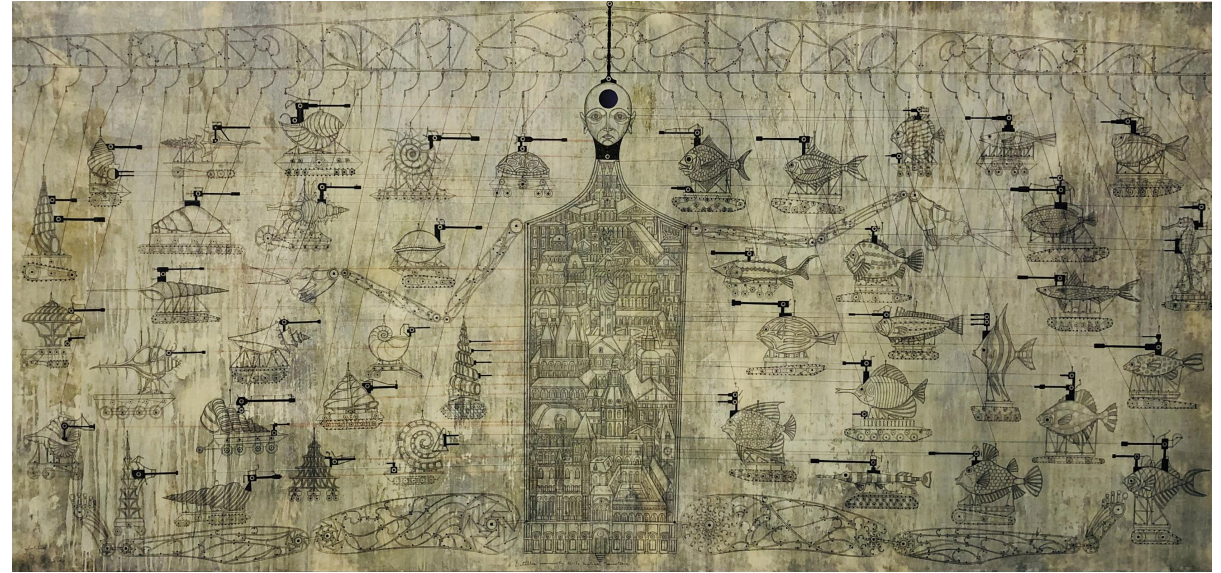
Let's discuss some of the ideas and symbols you think support the title.

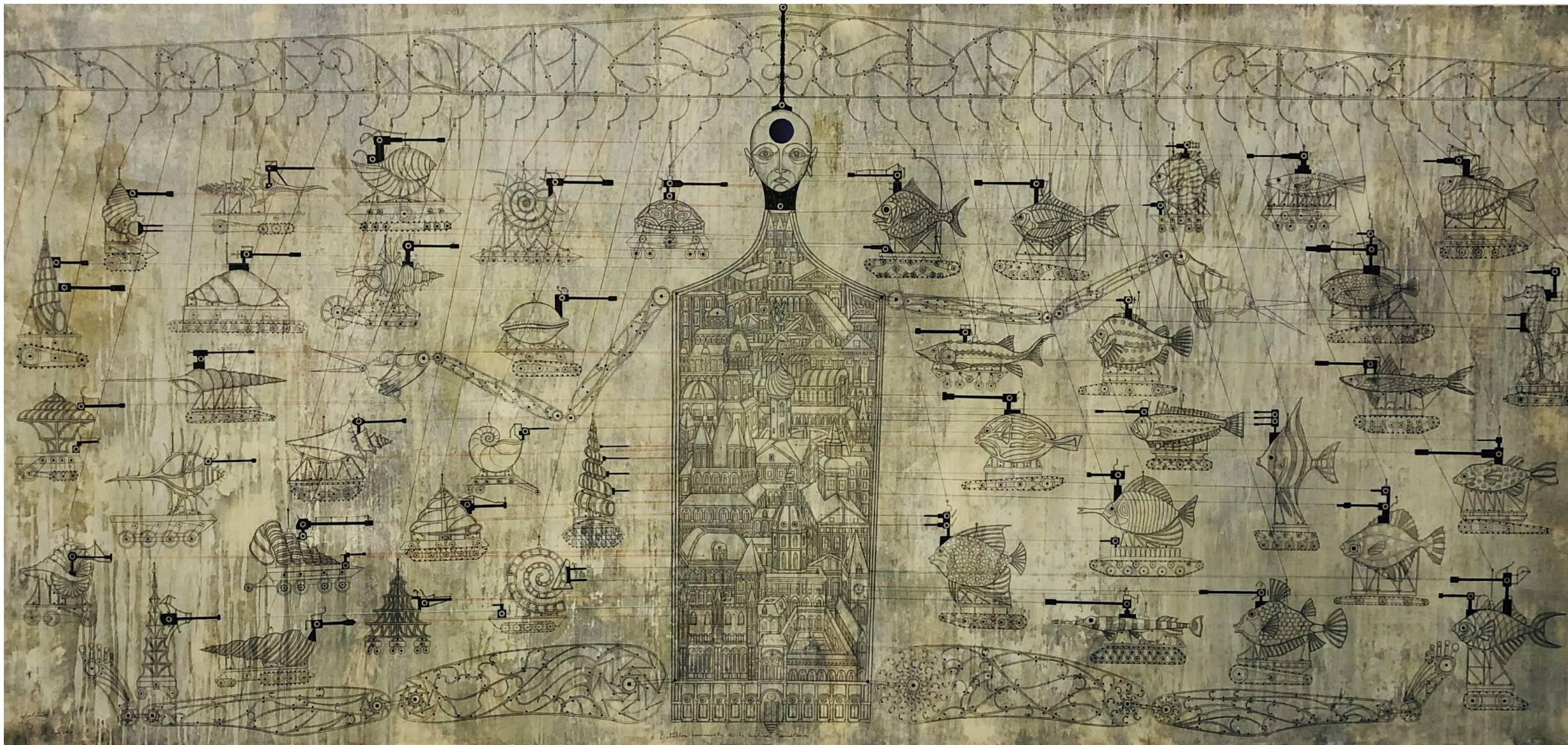




Interpretation

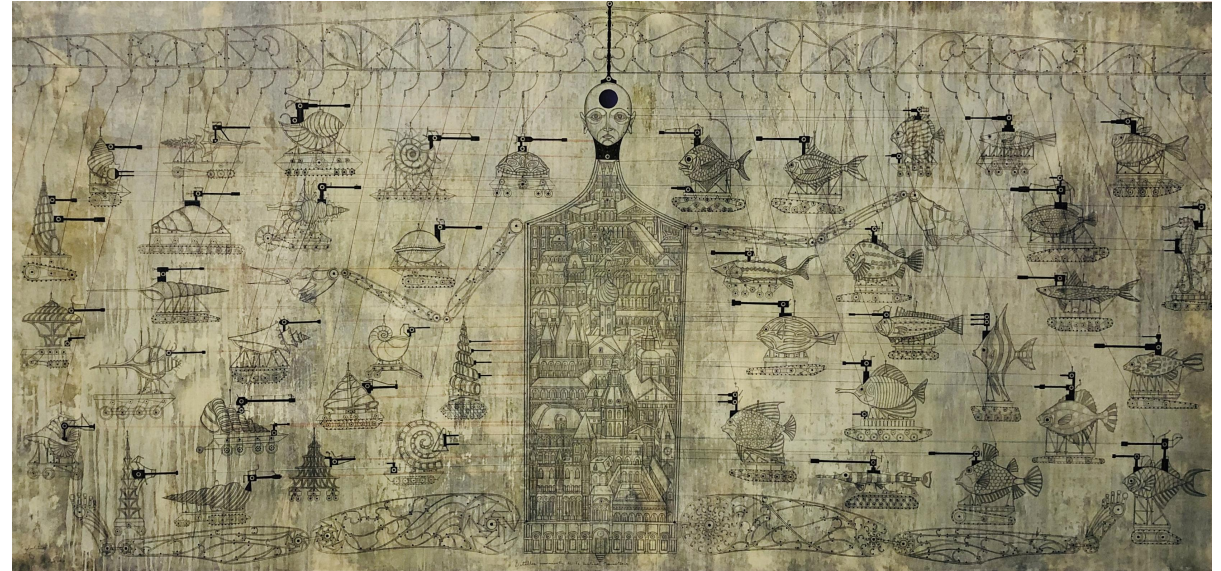
Using your imagination, what would you say would happen if this world existed in real life?





Judgment

Share some ways you may or may not connect with the world he is sharing with us in this artwork?





Art Making Activity

Instructions and Materials



Symbolic world

Students will design their own surreal world creating their own symbols and narrative inspired by the work of Carlos Estevez.



Materials

Page 1 of 1

- Paper
- Markers, crayons or color pencils
- Pencil
- Scissors
- Ruler
- Glue



Instructions

Step 1 of 10

Thinking about the kind of world you will create, choose paper and draw a shape that represents you. The shape can be geometric or organic.

Use any color of your choice. This artist chose orange and drew a rectangle

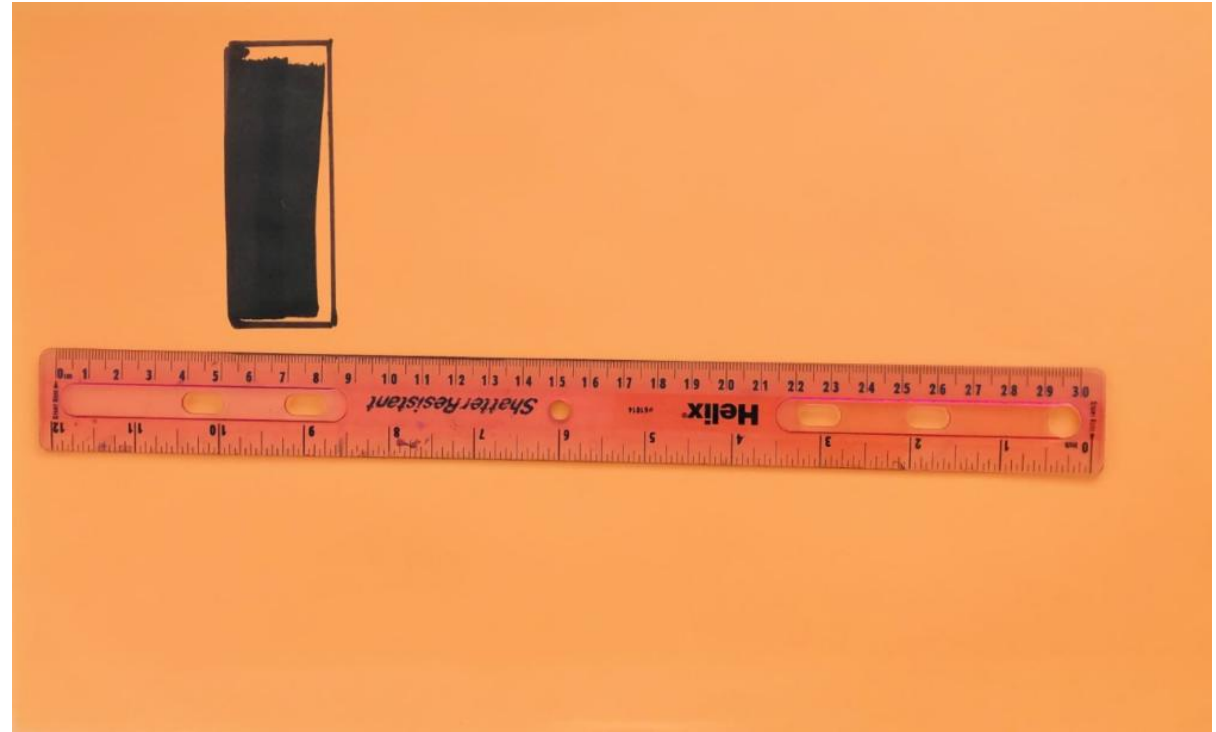


Instructions

Step 2 of 10

You can use a ruler to draw the geometric shape of your choice. If it is an organic shape you can draw it free hand.

This artist's shape-self is placed on the left side of the paper. (Carlos Estevez placed the main figure in the center).



Instructions

Step 3 of 10

You can add lines or other designs to your shape-self.

This artist drew some black lines on another sheet of paper.

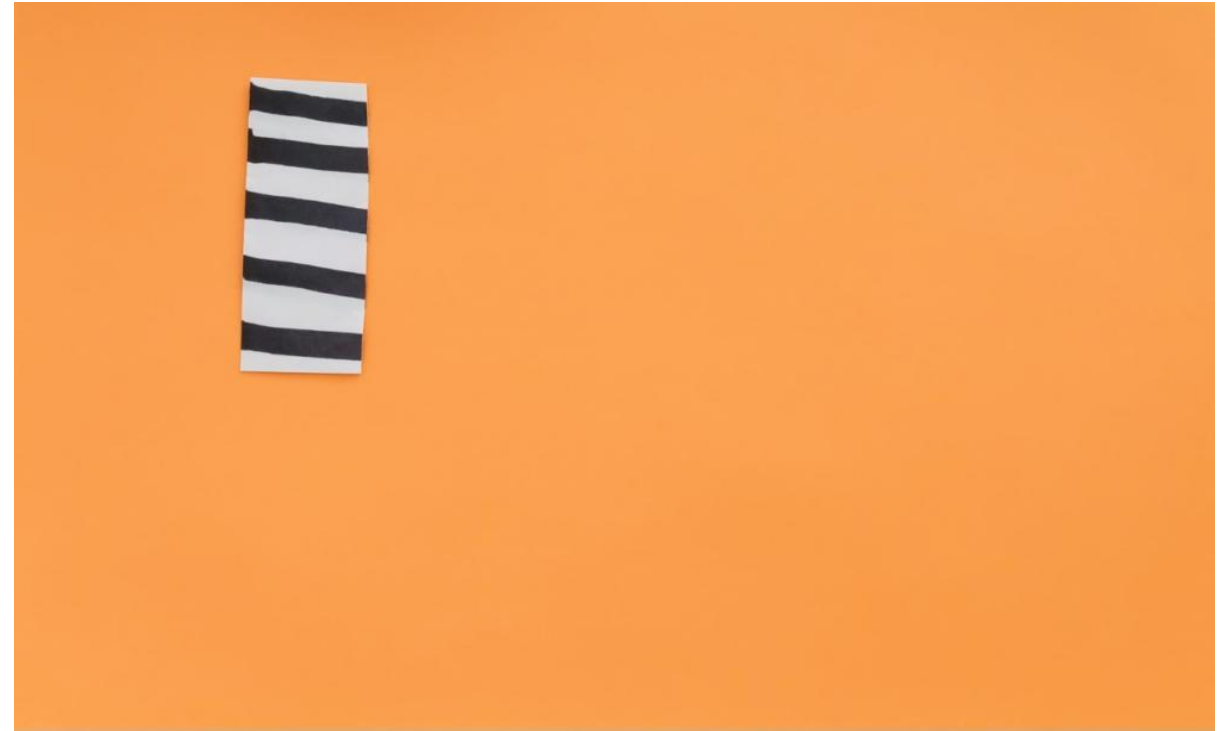


Instructions

Step 4 of 10

This artist cut out a rectangle and placed it over their original black rectangle. You can replace your shape or leave it as is.

This black and white striped rectangle is a symbol of the surreal world this artist is creating.



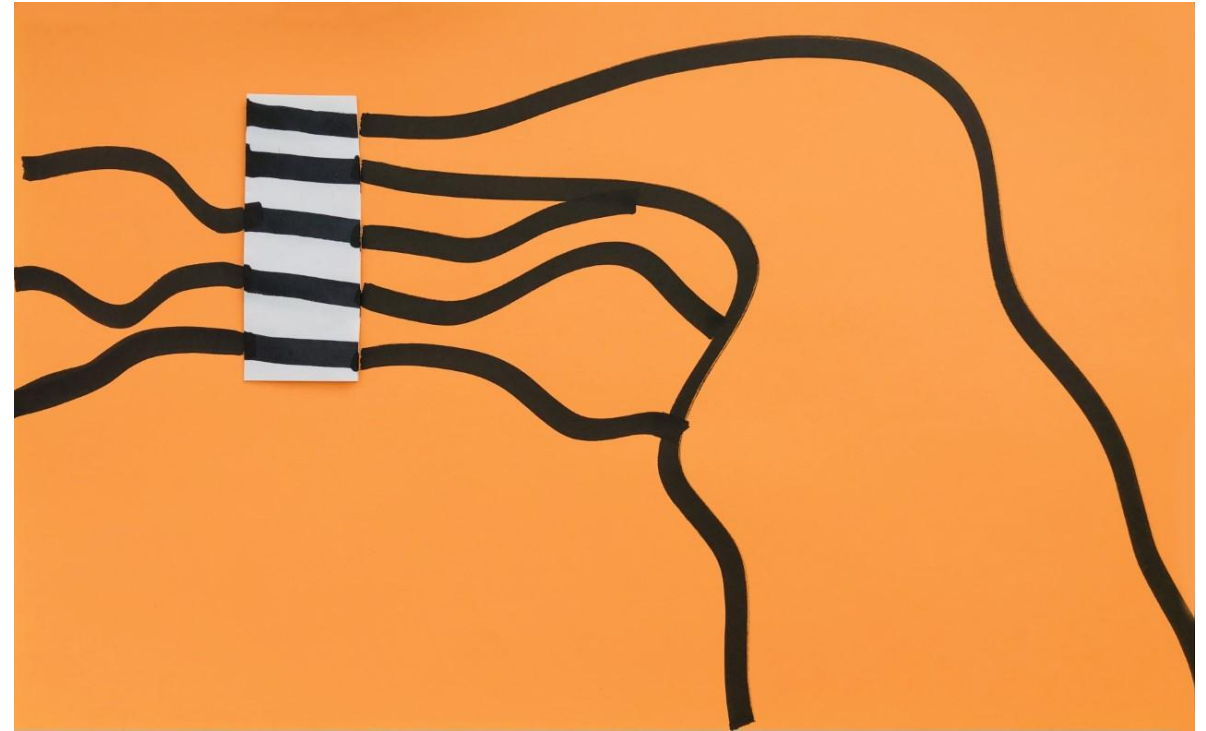
Instructions

Step 5 of 10

This rectangular self is going to travel all over the paper.

This artist drew black lines that symbolize roads, paths and journeys that will take them to far away unknown places.

Draw some symbols and lines on your artwork too.

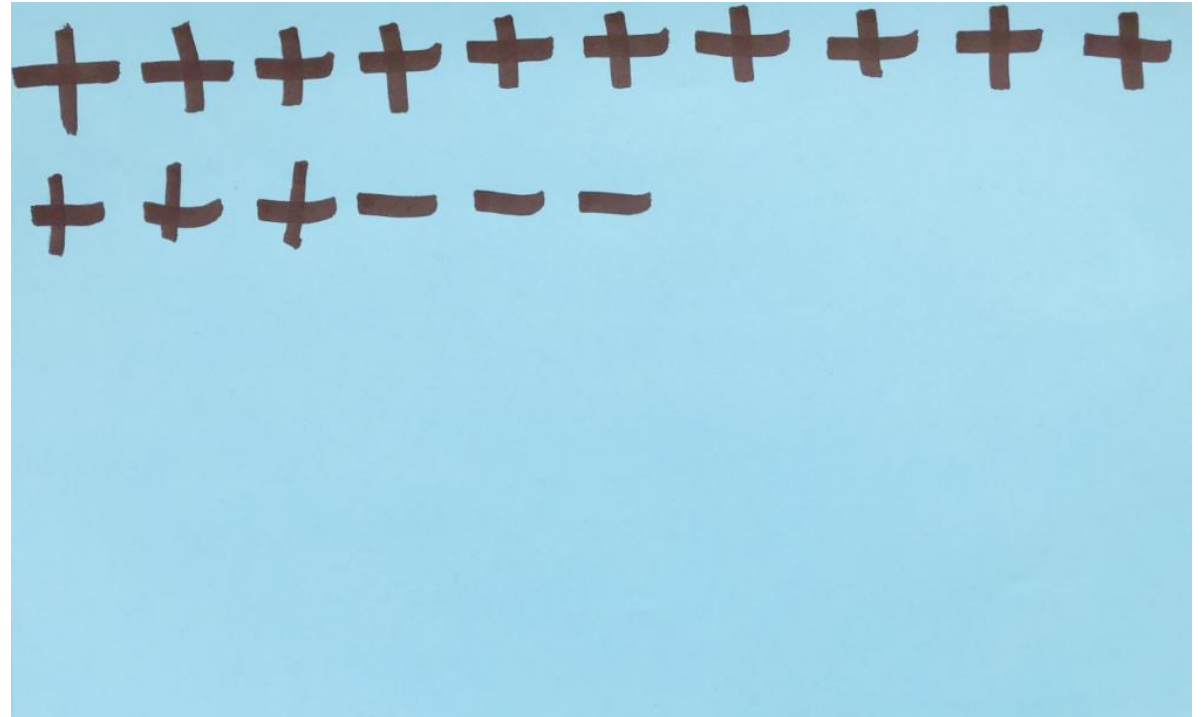


Instructions

Step 6 of 10

Draw your shapes and add color to your world. Shapes can be abstract, or realistic drawings.

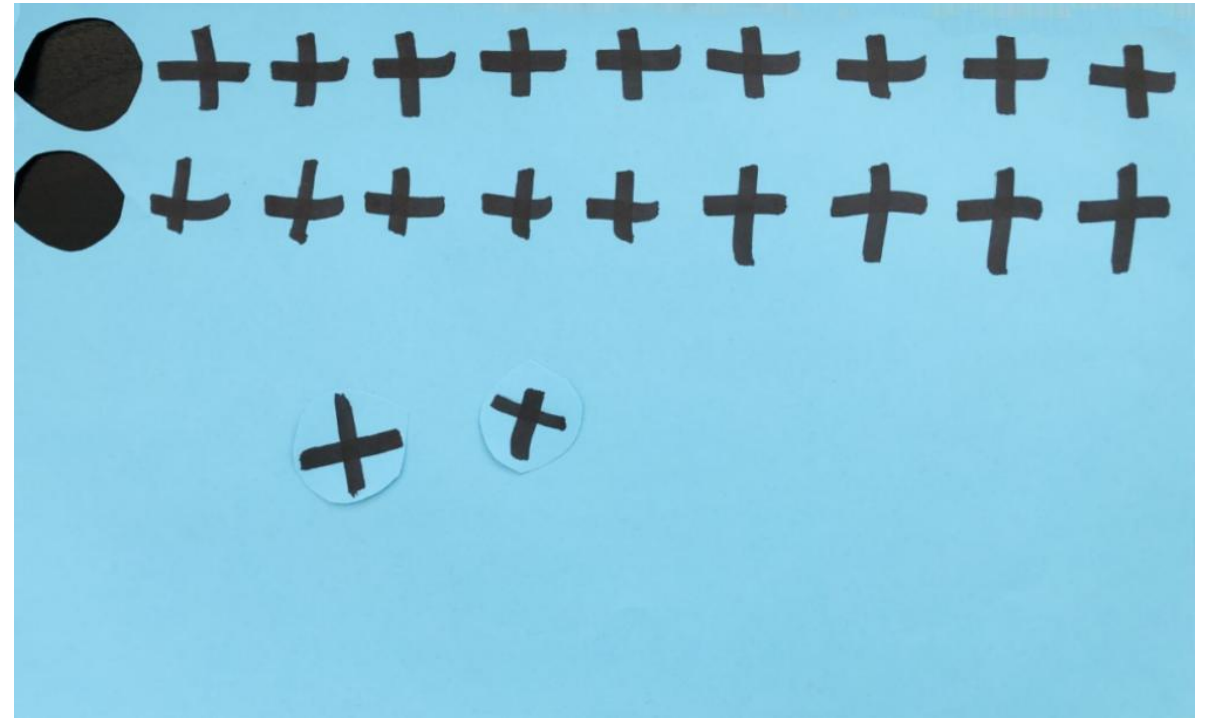
This artist drew these plus symbols to mark the many places they will visit to add to my design.



Instructions

Step 7 of 10

Using your scissors, cut out your shapes and drawings to add to your Symbolic World.

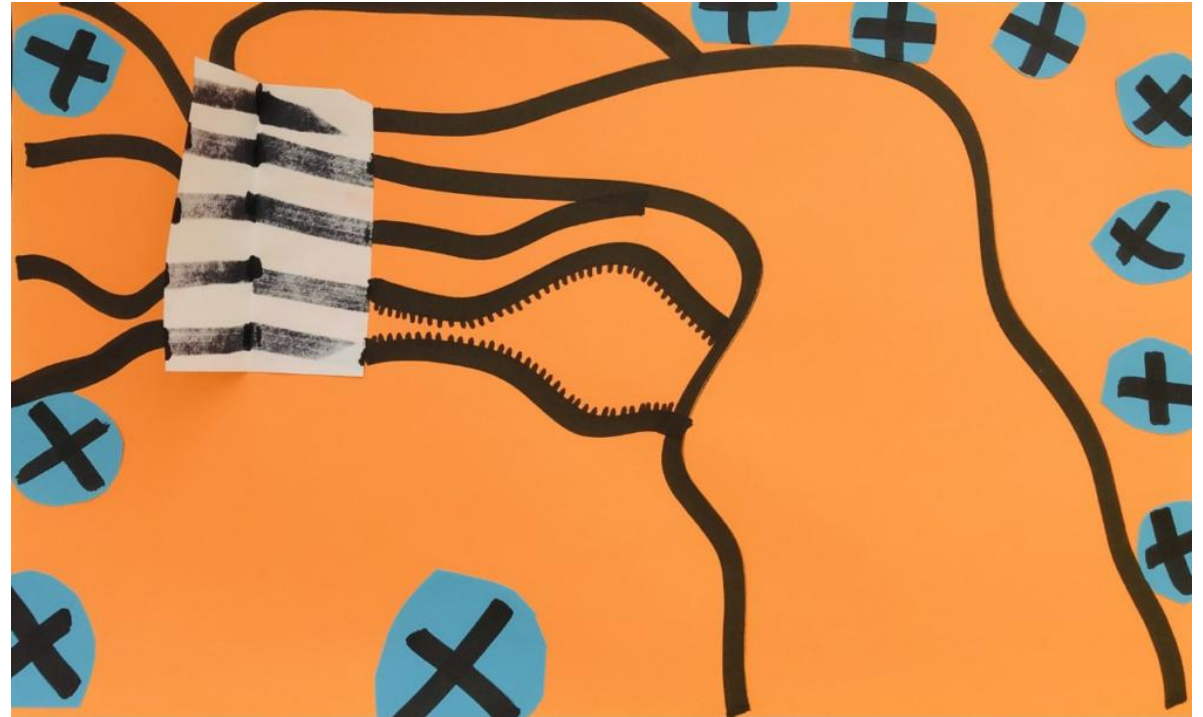


Instructions

Step 8 of 10

Place your symbols and drawings along the lines and paths drawn in your Symbolic World.

Find an arrangement you are happy with and glue down your cut out symbols.



Instructions

Step 9 of 10

Add embellishments and decoration to your lines, designs, and pathways.

Be creative! This artist added small marks on either side of their lines.



Instructions

Step 10 of 10

Make any last additions or changes.

In this example, the artist added a yellow circle with red lips to their rectangular shape-self.

When you're finished, don't forget to title your artwork!



"Traveling lines and blue"



For Educators

Florida State Standards



Florida State Standards

PAMM Education's team of Teaching Artists develops this and other digital educational resources to align with Florida State Standards.

This presentation is aligned to the following standards based on grade level and content.



Science

- **SC.3.P.10** Energy exists in many forms and has the ability to do work and cause change.

English/Language Arts

- **LAFS.3.SL.2** Presentation of knowledge or ideas.

Visual Arts

- **VA.3.C.2** Assessing our own and others' artistic work. Using critical thinking, problem-solving, and decision making skills is central to artistic growth.



Pérez
Art
Museum
Miami

